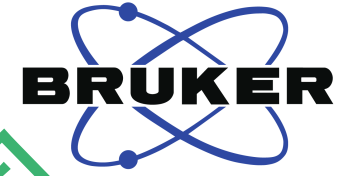


8.058  
8.054  
8.031  
7.224  
7.218  
7.176  
7.170  
7.155  
7.150  
6.940  
6.934  
6.918  
6.912  
6.839  
6.833  
6.819  
6.798  
5.378  
5.359  
5.341  
5.107  
5.091  
5.077  
5.074

3.346  
3.328

2.130  
2.111  
2.094  
2.078  
2.055  
2.039  
2.021  
1.712  
1.576  
1.554



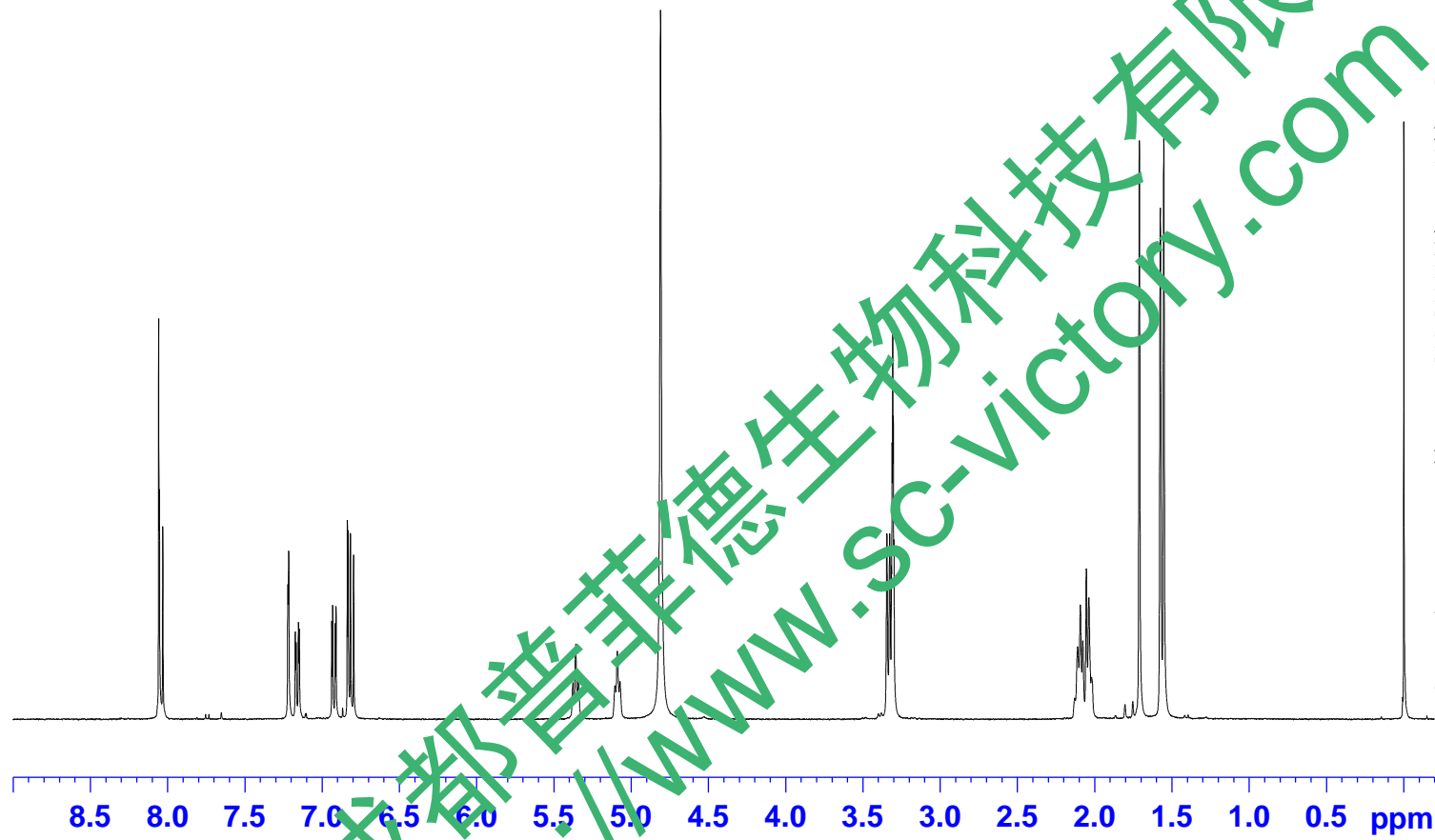
Current Data Parameters  
NAME BuGuZhiWeiZhi-1H NMR CD3OD  
EXPNO 1  
PROCNO 1

F2 - Acquisition Parameters

INSTRUM spect  
PROBHD 5 mm PABBO BB/  
PULPROG zg30  
TD 65536  
SOLVENT MeOD  
NS 4  
DS 2  
SWH 8012.820 Hz  
FIDRES 0.122266 Hz  
AQ 4.0894465 sec  
RG 124.64  
DW 62.400 usec  
DE 6.50 usec  
TE 301.1 K  
D1 2.0000000 sec  
TD0 1

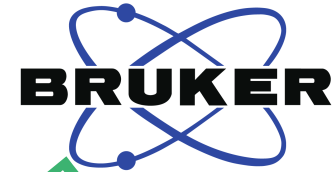
==== CHANNEL f1 =====  
SFO1 400.1324710 MHz  
NUC1 1H  
P1 14.79 usec  
PLW1 11.50800037 W

F2 - Processing parameters  
SI 65536  
SF 400.1300083 MHz  
WDW EM  
SSB 0  
LB 0.30 Hz  
GB 0  
PC 1.00  
SR 8.34 Hz



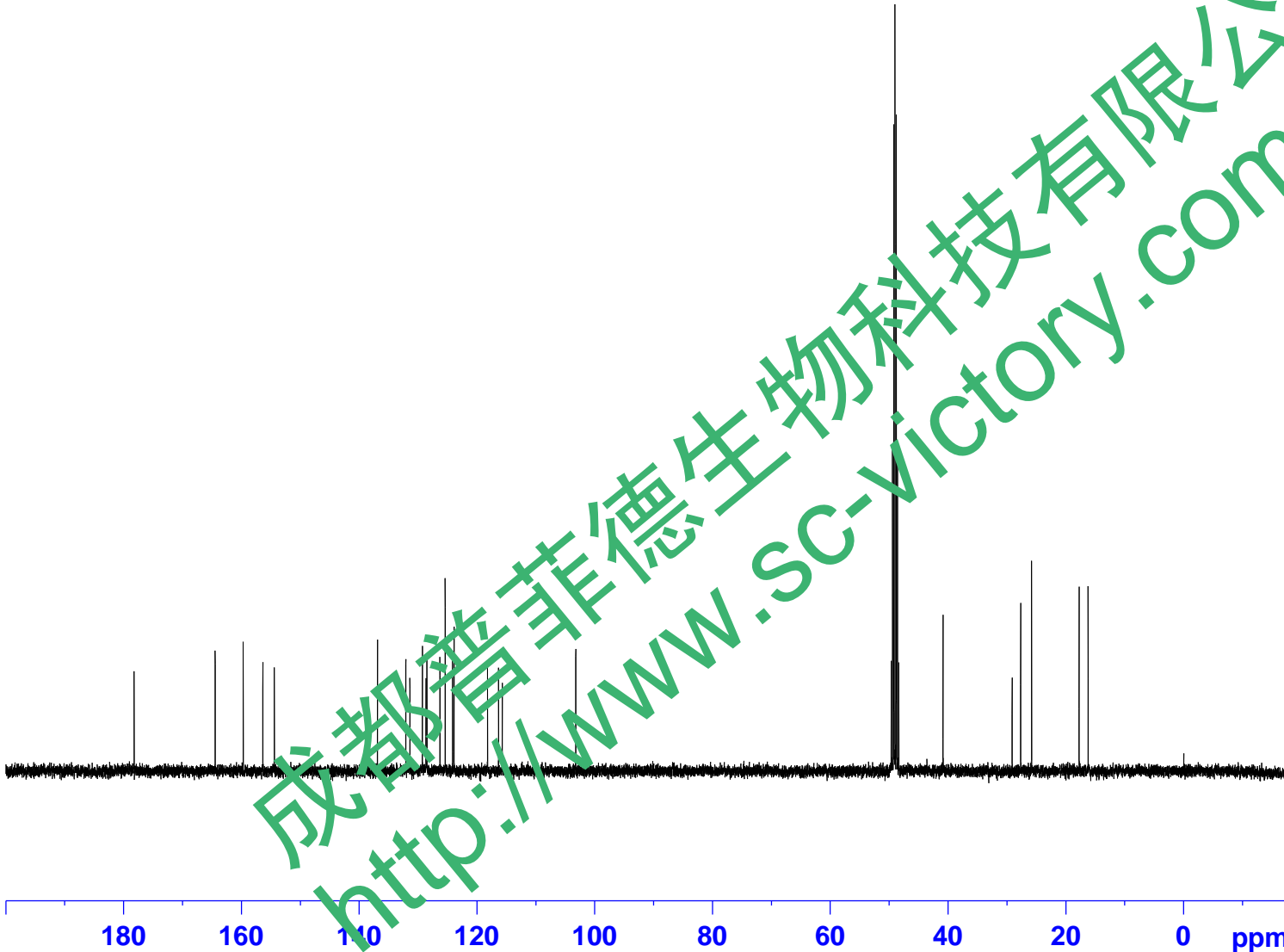
1.98  
1.00  
1.02  
1.01  
1.97  
1.01  
1.02  
1.97  
4.00  
3.01  
3.03  
2.94

成都普菲德生物科技有限公司  
http://www.sc-victory.com



— 178.26  
— 164.49  
— 159.73  
— 156.39  
— 154.45  
— 136.91  
— 132.12  
— 131.42  
— 129.29  
— 128.68  
— 128.53  
— 126.32  
— 125.43  
— 124.18  
— 123.91  
— 118.24  
— 116.37  
— 115.72  
— 103.25

— 40.87  
— 29.14  
— 27.69  
— 25.84  
— 17.77  
— 16.24



Current Data Parameters  
NAME BuGuZhiWeiZhi-13C NMR CD3OD  
EXPNO 1  
PROCNO 1

F2 - Acquisition Parameters

INSTRUM spect  
PROBHD 5 mm PABBO BB/  
PULPROG zgig30  
TD 65536  
SOLVENT MeOD  
NS 128  
DS 4  
SWH 24038.461 Hz  
FIDRES 0.366798 Hz  
AQ 1.3631488 sec  
RG 202.5  
DW 20.800 usec  
DE 6.50 usec  
TE 301.2 K  
D1 2.00000000 sec  
D11 0.03000000 sec  
TD0 1

==== CHANNEL f1 =====  
SFO1 100.6228298 MHz  
NUC1 13C  
P1 10.13 usec  
PLW1 51.00000000 W

==== CHANNEL f2 =====  
SFO2 400.1316005 MHz  
NUC2 1H  
CPDPRG[2] waltz16  
PCPD2 90.00 usec  
PLW2 11.50800037 W  
PLW12 0.31077999 W

F2 - Processing parameters  
SI 262144  
SF 100.6126275 MHz  
WDW EM  
SSB 0  
LB 1.00 Hz  
GB 0  
PC 1.40  
SR -141.45 Hz