

— 12.565

8.033  
8.023  
8.020  
8.017  
8.014  
8.010  
8.005  
7.999  
7.993  
7.989  
7.599  
7.593  
7.584  
7.576  
7.567  
6.461  
6.456  
6.227  
6.222

3.810



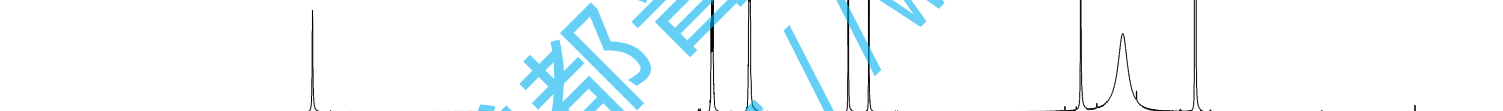
Current Data Parameters  
NAME GaoLiangJiang WeiZhi-1H NMR DMSO  
EXPNO 1  
PROCNO 1

F2 - Acquisition Parameters

INSTRUM spect  
PROBHD 5 mm PABBO BB/  
PULPROG zg30  
TD 65536  
SOLVENT DMSO  
NS 32  
DS 2  
SWH 8012.820 Hz  
FIDRES 0.122266 Hz  
AQ 4.0894465 sec  
RG 202.5  
DW 62.400 usec  
DE 6.50 usec  
TE 301.2 K  
D1 2.00000000 sec  
TD0 1

==== CHANNEL f1 =====  
SF01 400.1324710 MHz  
NUC1 1H  
P1 14.79 usec  
PLW1 11.50800037 W

F2 - Processing parameters  
SI 65536  
SF 400.1300016 MHz  
WDW EM  
SSB 0  
LB 0.30 Hz  
GB 0  
PC 1.00  
SR 1.62 Hz



15 14 13 12 11 10 9 8 7 6 5 4 3 2 1 ppm

0.98

1.97

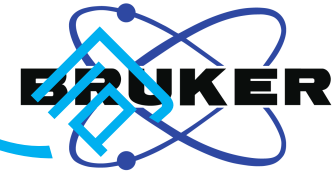
3.03

1.00

0.99

3.01

成都普菲德生物科技有限公司  
http://www.sc-victory.com



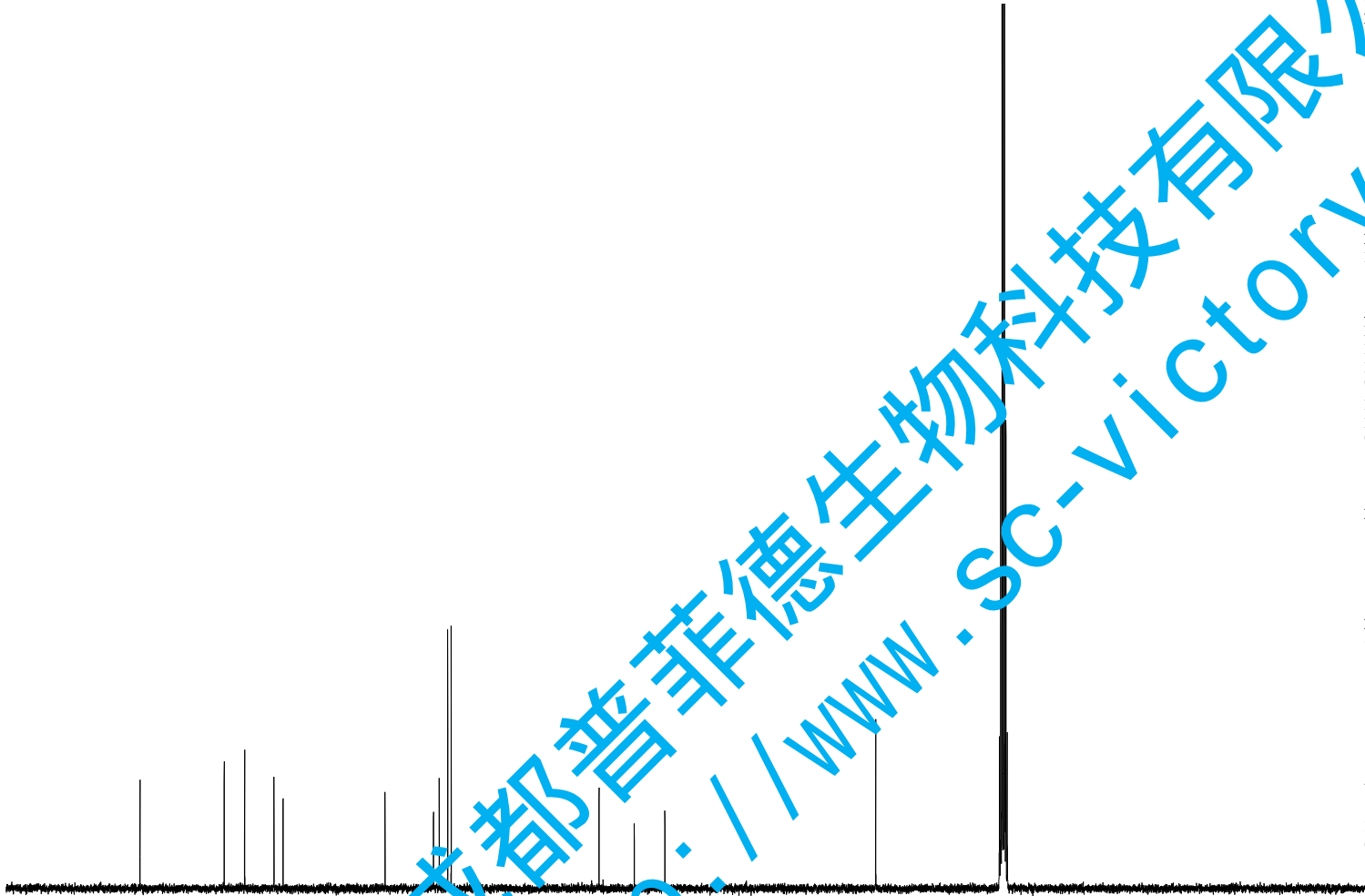
— 178.56

— 165.05  
— 161.77  
— 157.07  
— 155.60

— 139.24  
— 131.46  
— 130.55  
— 129.18  
— 128.62

— 104.89  
— 99.23  
— 94.32

— 60.47



Current Data Parameters  
NAME GaoLiangJiang Weizhi-13C NMR DMSO  
EXPNO 1  
PROCNO 1

F2 - Acquisition Parameters

INSTRUM spect  
PROBHD 5 mm PABBO BB/  
PULPROG zgig30  
TD 65536  
SOLVENT DMSO  
NS 361  
DS 4  
SWH 24038.461 Hz  
FIDRES 0.366798 Hz  
AQ 1.3631488 sec  
RG 202.5  
DW 20.800 usec  
DE 6.50 usec  
TE 301.2 K  
D1 2.00000000 sec  
D11 0.03000000 sec  
TDO 1

==== CHANNEL f1 =====  
SF01 100.6228298 MHz  
NUC1 13C  
P1 10.13 usec  
PLW1 51.00000000 W

==== CHANNEL f2 =====  
SF02 400.1316005 MHz  
NUC2 1H  
CPDPRG[2] waltz16  
PCPD2 90.00 usec  
PLW2 11.50800037 W  
PLW12 0.31077999 W

F2 - Processing parameters  
SI 262144  
SF 100.6127690 MHz  
WDW EM  
SSB 0  
LB 1.00 Hz  
GB 0  
PC 1.40  
SR 0 Hz

180 160 140 120 100 80 60 40 20 0 ppm

成都普菲德生物科技有限公司  
http://www.sc-victory.com