

Current Data Parameters
NAME guanggancuoding
EXPNO 2
PROCNO 1

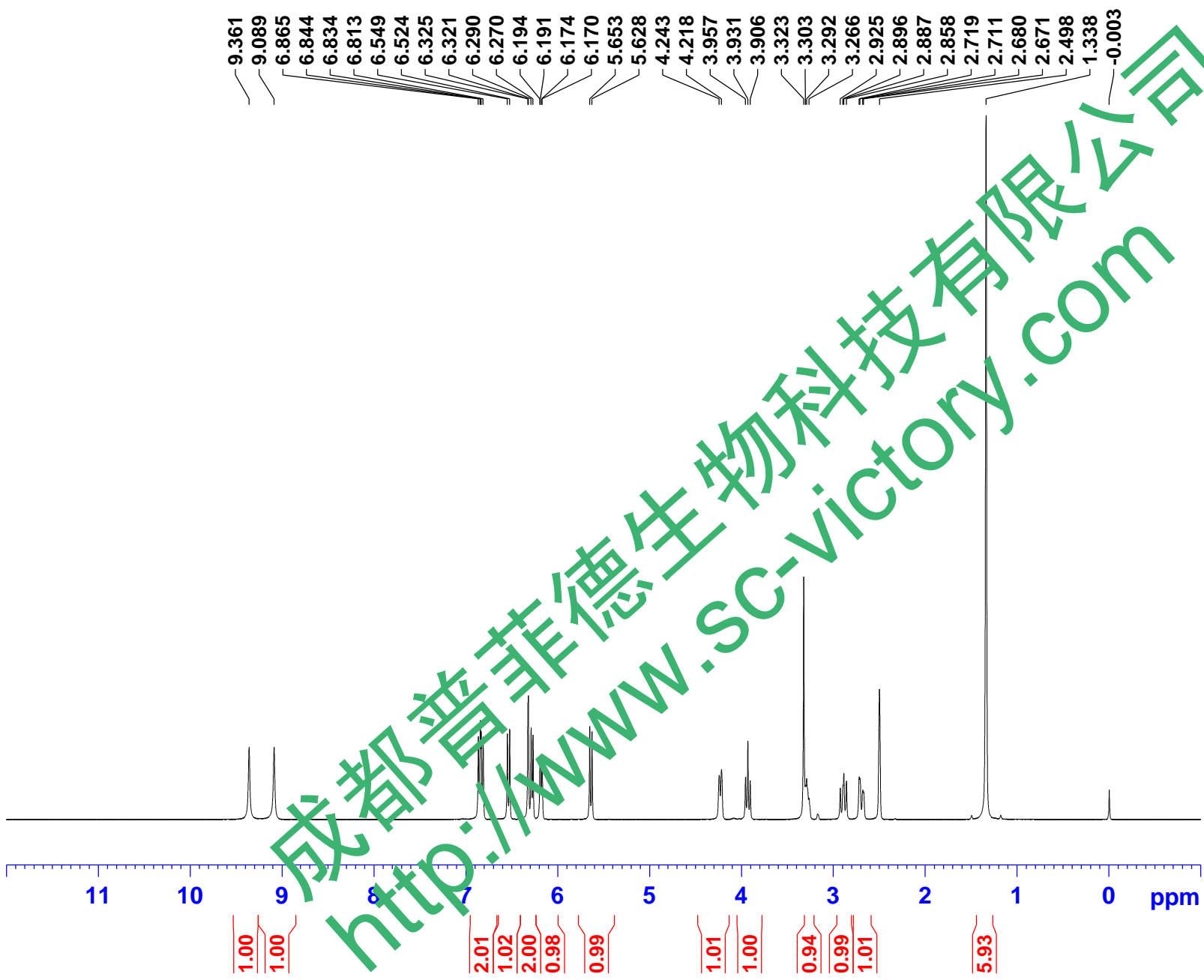
F2 - Acquisition Parameters

INSTRUM spect
PROBHD 5 mm PABBO BB-
PULPROG zgpg30
TD 65536
SOLVENT DMSO
NS 1024
DS 4
SWH 24038.461 Hz
FIDRES 0.366798 Hz
AQ 1.3631988 sec
RG 194.85
DW 20.800 usec
DE 6.50 usec
TE -39.5 K
D1 2.0000000 sec
D11 0.0300000 sec
TD0 1

==== CHANNEL f1 =====
NUC1 13C
P1 9.24 usec
PLW1 95.0000000 W
SFO1 100.6228293 MHz

==== CHANNEL f2 =====
CPDPRG2 waltz16
NUC2 1H
PCPD2 80.00 usec
PLW2 19.0000000 W
PLW12 0.2529200 W
PLW13 0.1618700 W
SFO2 400.1316005 MHz

F2 - Processing parameters
SI 32768
SF 100.6128183 MHz
WDW EM
SSB 0
LB 1.00 Hz
GB 0
PC 1.40



Current Data Parameters
 NAME guangancaoding
 EXPNO 1
 PROCNO 1

F2 - Acquisition Parameters

INSTRUM spect
 PROBHD 5 mm PABBO BB-
 PULPROG zg30
 TD 65536
 SOLVENT DMSO
 NS 16
 DS 2
 SWH 8223.685 Hz
 FIDRES 0.125483 Hz
 AQ 3.9846387 sec
 RG 86.75
 DW 60.800 usec
 DE 6.50 usec
 TE -39.5 K
 D1 1.00000000 sec
 TD0 1

===== CHANNEL f1 =====
 NUC1 1H
 P1 9.23 usec
 PLW1 20.00000000 W
 SFO1 400.1324710 MHz

F2 - Processing parameters
 SI 65536
 SF 400.1300044 MHz
 WDW EM
 SSB 0
 LB 0.30 Hz
 GB 0
 PC 1.00

成都普菲德生物科技有限公司
<http://www.sc-victory.com>