

— 12.097

— 8.873

7.513  
7.474

— 6.984

6.431  
6.391

— 3.801



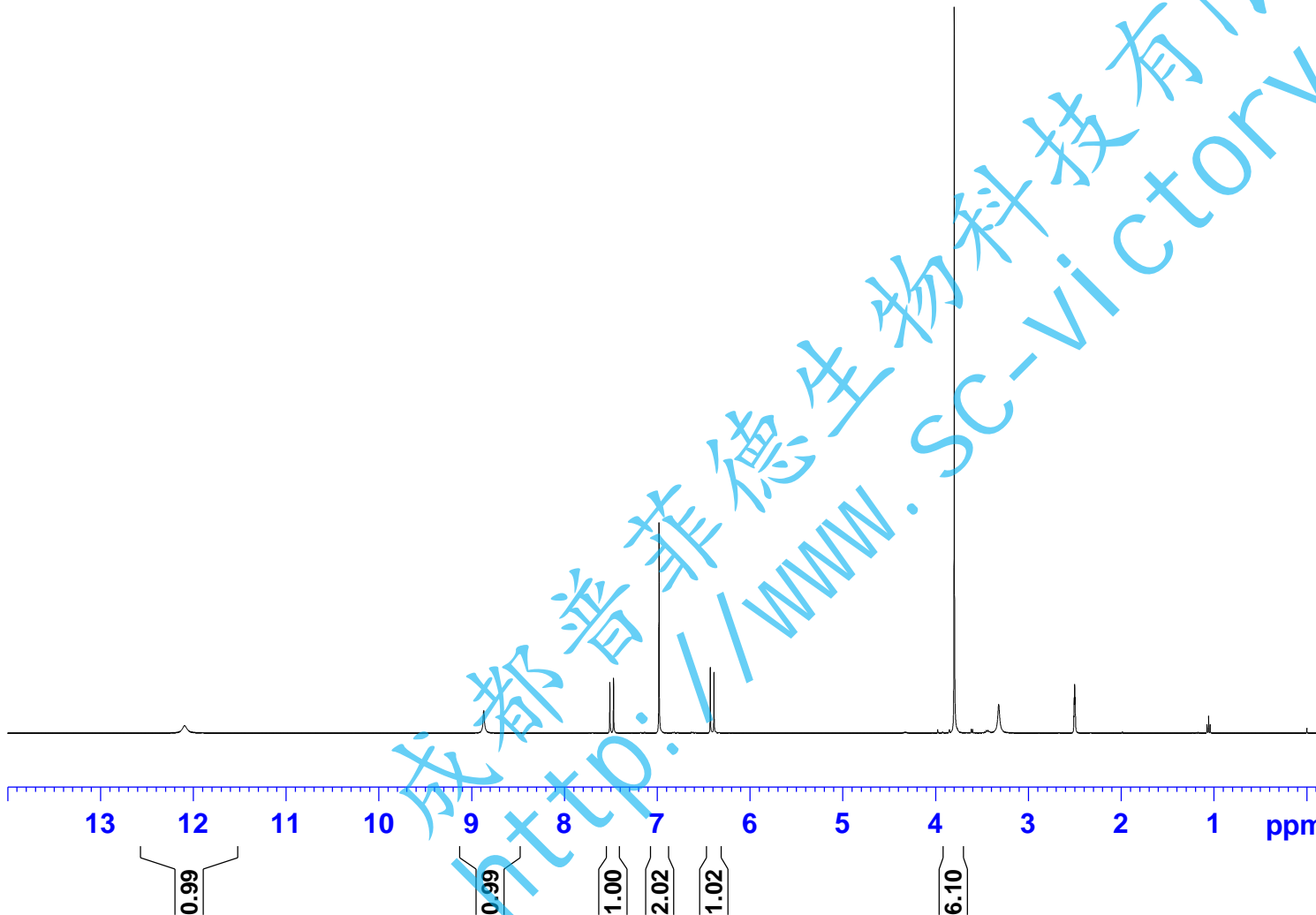
Current Data Pufeide  
NAME JieZiSuan-1H NMR DMSO  
EXPNO 1  
PROCNO 1

F2 - Acquisition Parameters

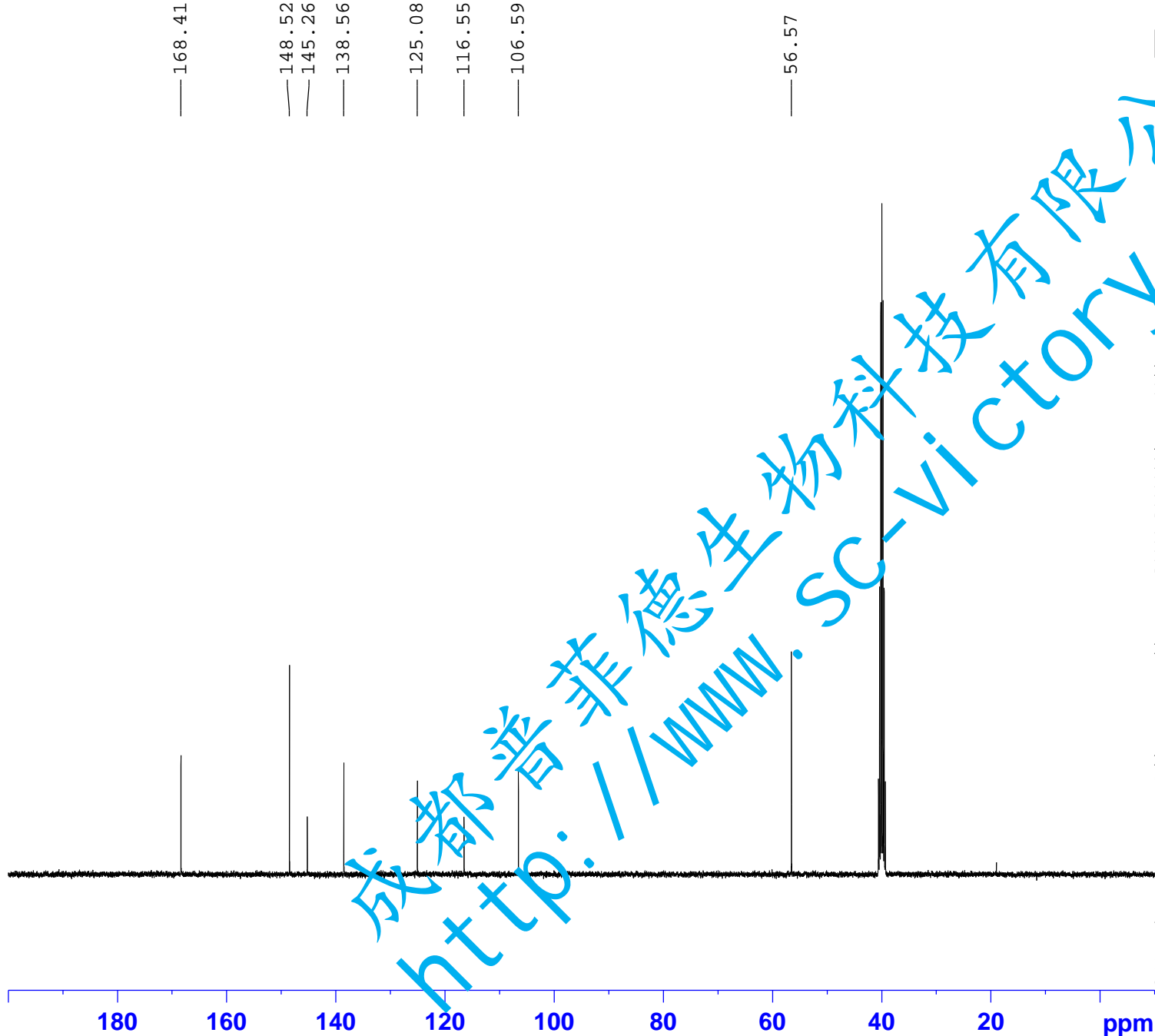
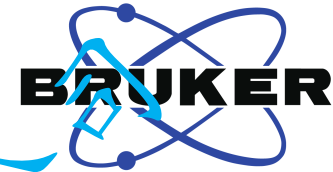
INSTRUM spect  
PROBHD 5 mm PABBO BB/  
PULPROG zg30  
TD 65536  
SOLVENT DMSO  
NS 16  
DS 2  
SWH 8012.820 Hz  
FIDRES 0.122266 Hz  
AQ 4.0894465 sec  
RG 163.31  
DW 62.400 usec  
DE 6.50 usec  
TE 301.1 K  
D1 2.0000000 sec  
TD0 1

==== CHANNEL f1 =====  
SF01 400.1324710 MHz  
NUC1 1H  
P1 14.79 usec  
PLW1 11.50800037 W

F2 - Processing parameters  
SI 262144  
SF 400.1300019 MHz  
WDW EM  
SSB 0  
LB 0.30 Hz  
GB 0  
PC 1.00  
SR 1.91 Hz



成都普菲德生物科技有限公司  
http://www.sc-victory.com



Current Data: Pufeide  
NAME: Tiazosuan-13C NMR DMSO  
EXPNO: 1  
PROCNO: 1

F2 - Acquisition Parameters

INSTRUM: spect  
PROBHD: 5 mm PABBO BB/  
PULPROG: zgig30  
TD: 65536  
SOLVENT: DMSO  
NS: 373  
DS: 4  
SWH: 24038.461 Hz  
FIDRES: 0.366798 Hz  
AQ: 1.3631488 sec  
RG: 202.5  
DW: 20.800 usec  
DE: 6.50 usec  
TE: 301.2 K  
D1: 2.00000000 sec  
D11: 0.03000000 sec  
TD0: 1

==== CHANNEL f1 =====  
SFO1: 100.6228298 MHz  
NUC1: 13C  
P1: 10.13 usec  
PLW1: 51.00000000 W

==== CHANNEL f2 =====  
SFO2: 400.1316005 MHz  
NUC2: 1H  
CPDPRG[2]: waltz16  
PCPD2: 90.00 usec  
PLW2: 11.50800037 W  
PLW12: 0.31077999 W

F2 - Processing parameters

SI: 262144  
SF: 100.6127690 MHz  
WDW: EM  
SSB: 0  
LB: 1.00 Hz  
GB: 0  
PC: 1.40  
SR: 0 Hz