



Current Data Parameters  
NAME xinchengpiganerqingzhaertong  
EXPNO 2  
PROCNO 1

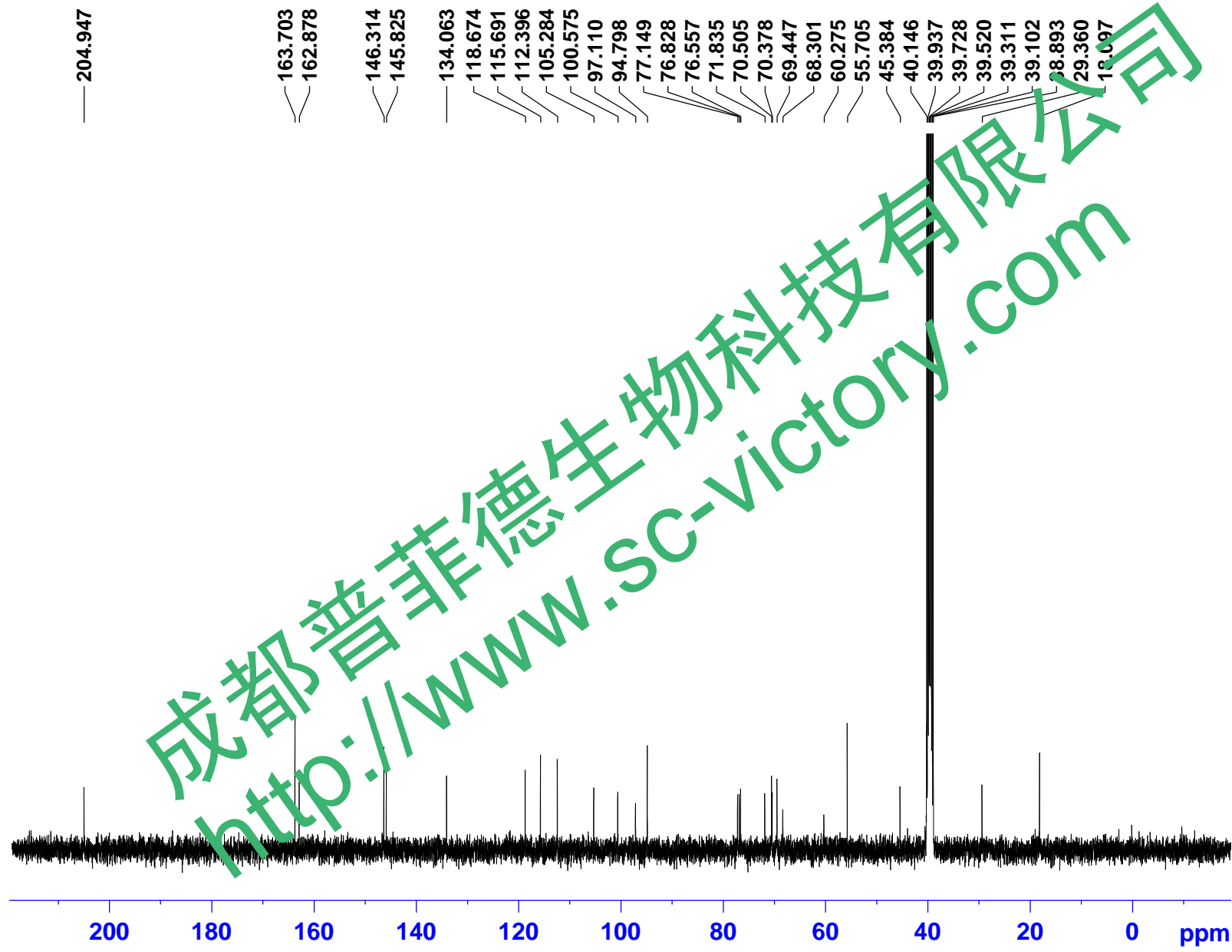
F2 - Acquisition Parameters

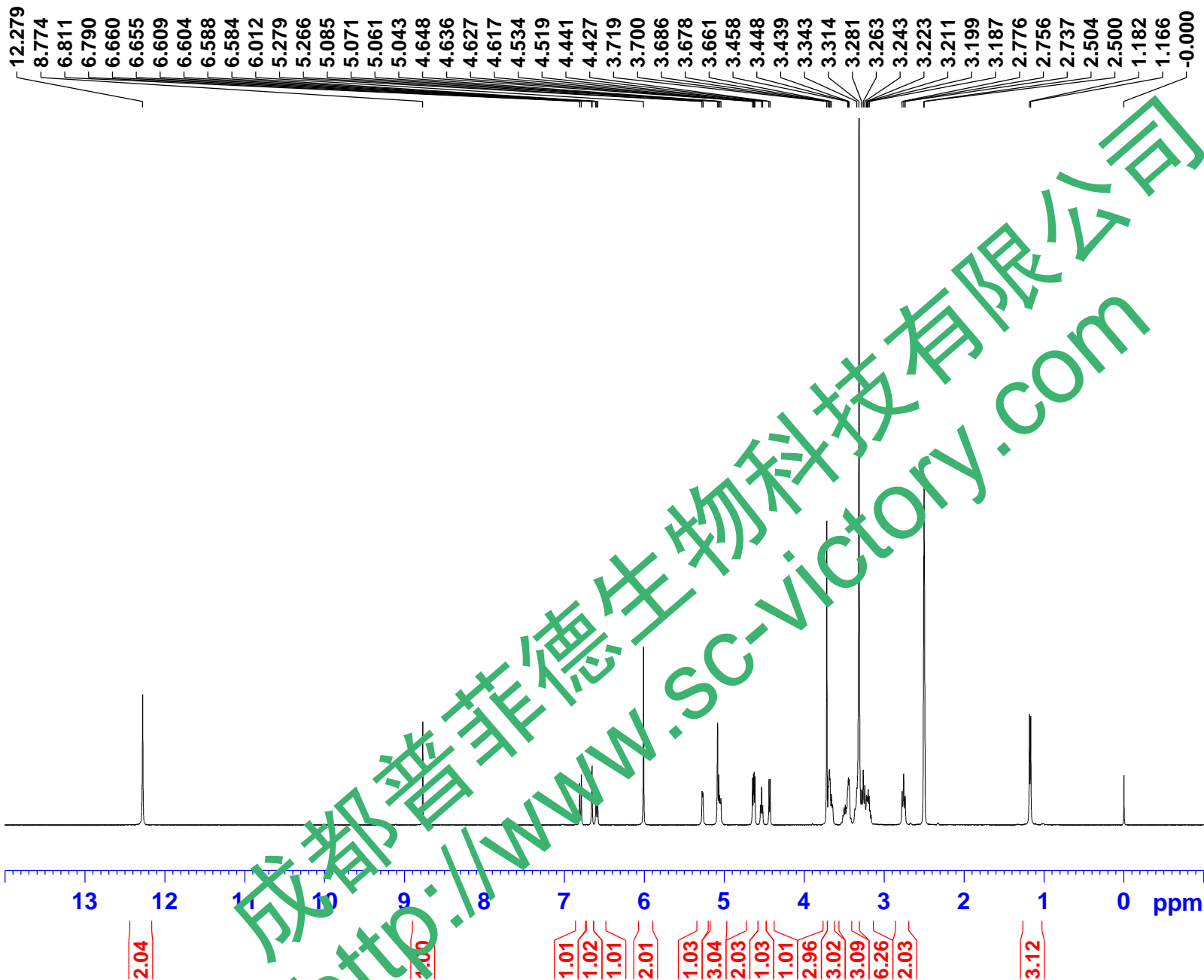
INSTRUM spect  
PROBHD 5 mm PABBO BB-  
PULPROG zgpg30  
TD 65536  
SOLVENT DMSO  
NS 1024  
DS 4  
SWH 24038.461 Hz  
FIDRES 0.366798 Hz  
AQ 1.3631988 sec  
RG 194.85  
DW 20.800 usec  
DE 6.50 usec  
TE 302.9 K  
D1 2.0000000 sec  
D11 0.0300000 sec  
TD0 1

==== CHANNEL f1 =====  
NUC1 13C  
P1 9.24 usec  
PLW1 95.0000000 W  
SFO1 100.6228293 MHz

==== CHANNEL f2 =====  
CPDPRG2 waltz16  
NUC2 1H  
PCPD2 80.00 usec  
PLW2 19.0000000 W  
PLW12 0.2529200 W  
PLW13 0.1618700 W  
SFO2 400.1316005 MHz

F2 - Processing parameters  
SI 32768  
SF 100.6128192 MHz  
WDW EM  
SSB 0  
LB 1.00 Hz  
GB 0  
PC 1.40





Current Data Parameters  
 NAME xinchengpiganerqingzhaertong  
 EXPNO 1  
 PROCNO 1

F2 - Acquisition Parameters

INSTRUM spect  
 PROBHD 5 mm PABBO BB-  
 PULPROG zg30  
 TD 65536  
 SOLVENT DMSO  
 NS 16  
 DS 2  
 SWH 8223.685 Hz  
 FIDRES 0.125483 Hz  
 AQ 3.9846387 sec  
 RG 96.43  
 DW 60.800 usec  
 DE 6.50 usec  
 TE 302.3 K  
 D1 1.00000000 sec  
 TDO 1

===== CHANNEL f1 =====  
 NUC1 1H  
 P1 9.23 usec  
 PLW1 20.00000000 W  
 SFO1 400.1324710 MHz

F2 - Processing parameters  
 SI 65536  
 SF 400.1300035 MHz  
 WDW EM  
 SSB 0  
 LB 0.30 Hz  
 GB 0  
 PC 1.00

成都普菲德生物科技有限公司  
<http://www.sc-victory.com>