

Display Report

Analysis Info

Analysis Name D:\Data\test\0713\xinchengpiganerqingzhaertong_96_01_1916.d
Method 1916.m
Sample Name xinchengpiganerqingzhaertong
Comment

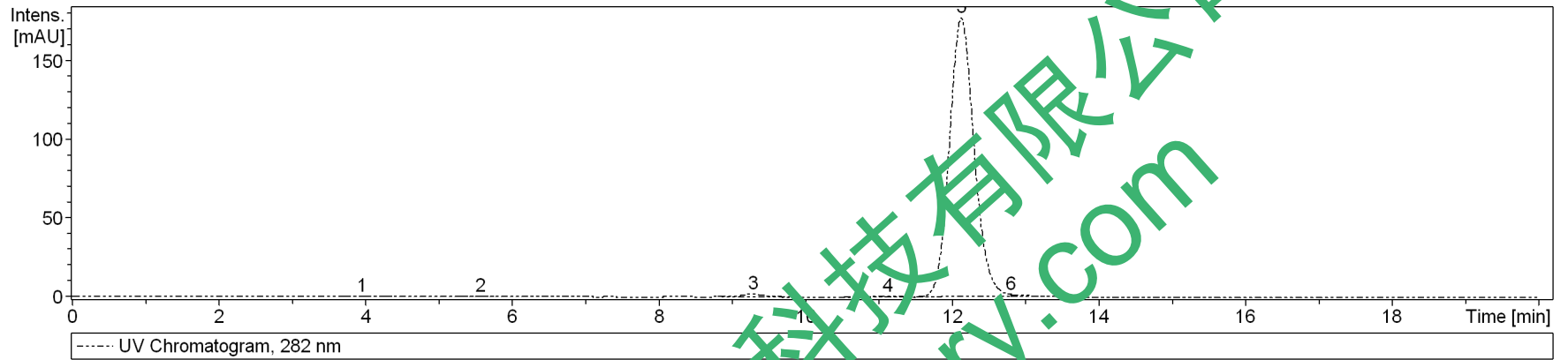
Operator bruker
Instrument amaZon SL

Acquisition Parameter

Ion Source Type ESI
Mass Range Mode UltraScan
Capillary Exit 140.0 V
Accumulation Time 2071 μ s

Ion Polarity Positive
Scan Begin 70 m/z
Averages 5 Spectra

Alternating Ion Polarity on
Scan End 1000 m/z
Trap Drive 50.6
Auto MS/MS off



#	RT [min]	Area	Height	Area Frac. %
1	4.0	3.3448	0	0.1
2	5.6	2.6811	0	0.1
3	9.3	34.7101	2	0.8
4	11.1	3.4424	0	0.1
5	12.1	4176.6068	178	98.5
6	12.8	21.4345	1	0.5

Display Report

Analysis Info

Analysis Name	D:\Data\test\0713\xinchengpiganerqingzhaertong_96_01_1916.d	Operator	bruker
Method	1916.m	Instrument	amaZon SL
Sample Name	xinchengpiganerqingzhaertong		
Comment			

Acquisition Parameter

Ion Source Type	ESI	Ion Polarity	Positive	Alternating Ion Polarity	on
Mass Range Mode	UltraScan	Scan Begin	70 m/z	Scan End	1000 m/z
Capillary Exit	140.0 V	n/a	n/a	Trap Drive	50.6
Accumulation Time	2071 μ s	Averages	5 Spectra	Auto MS/MS	off

