

# Display Report

## Analysis Info

Analysis Name D:\Data\test\0825\yishulisu\_16\_01\_1681.d  
Method 1681.m  
Sample Name yishulisu  
Comment

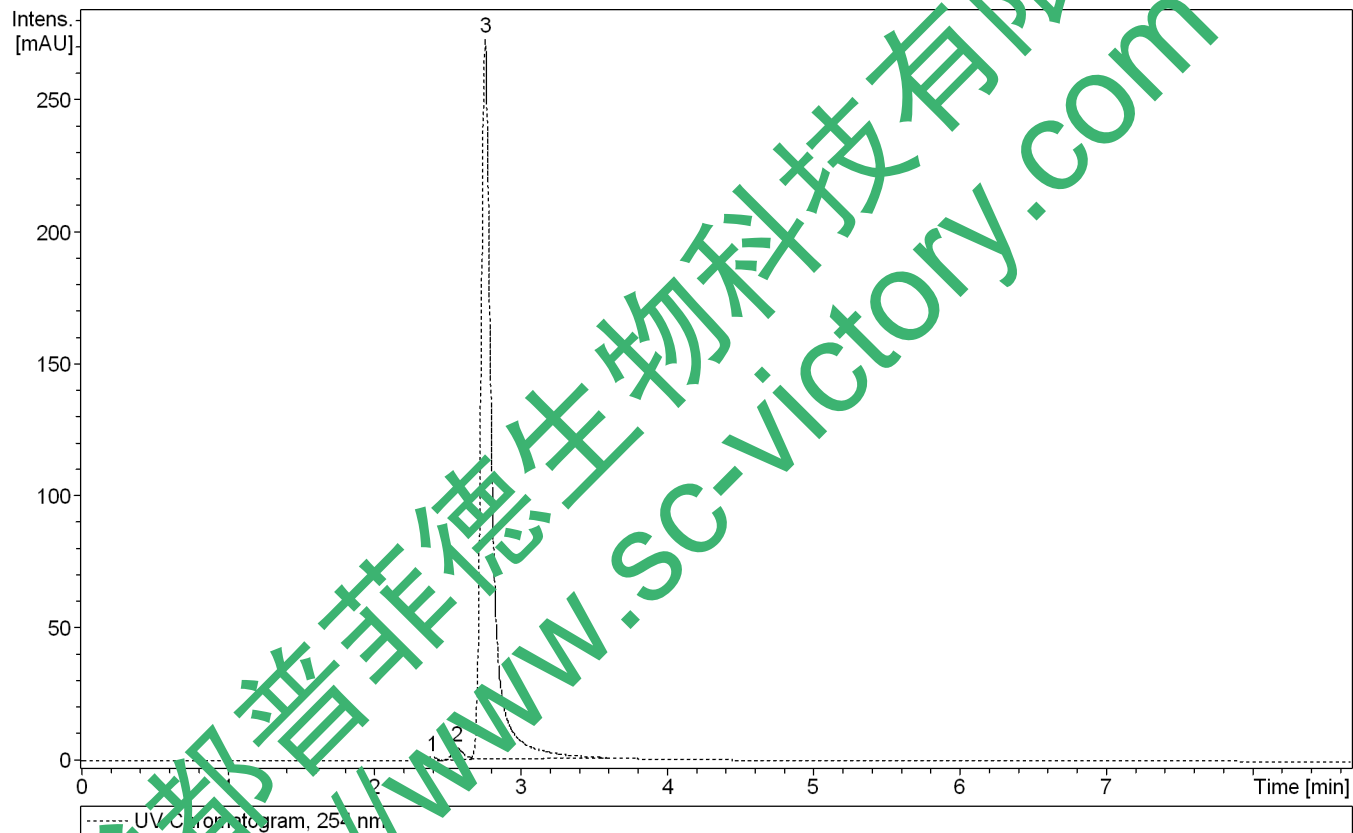
Operator bruker  
Instrument amaZon SL

## Acquisition Parameter

Ion Source Type ESI  
Mass Range Mode UltraScan  
Capillary Exit -140.0 V  
Accumulation Time 4377  $\mu$ s

Ion Polarity Negative  
Scan Begin 70 m/z  
n/a  
Averages 5 Spectra

Alternating Ion Polarity on  
Scan End 1000 m/z  
Trap Drive 50.6  
Auto MS/MS off



#	RT [min]	Area	Area Frac. %
1	2.4	5.925	0.4
2	2.6	24.332	1.6
3	2.8	1469.012	98.0

