

8.179  
8.162  
8.158  
7.923  
7.905  
7.902  
7.676  
7.657  
7.615  
7.599  
7.596  
7.579  
7.518  
7.499  
7.444  
7.440  
7.425  
7.421  
7.411  
7.406  
7.405  
7.402  
7.301  
5.752  
5.733  
4.955  
4.808  
4.778  
4.437  
4.418  
4.416  
4.345  
4.342  
4.268  
4.247  
3.963  
3.944  
2.765  
2.558  
2.432  
2.299  
2.294  
2.283  
2.275  
2.275  
2.161  
2.087  
1.796  
1.793  
1.688  
1.174  
1.117  
0.895  
0.878



```

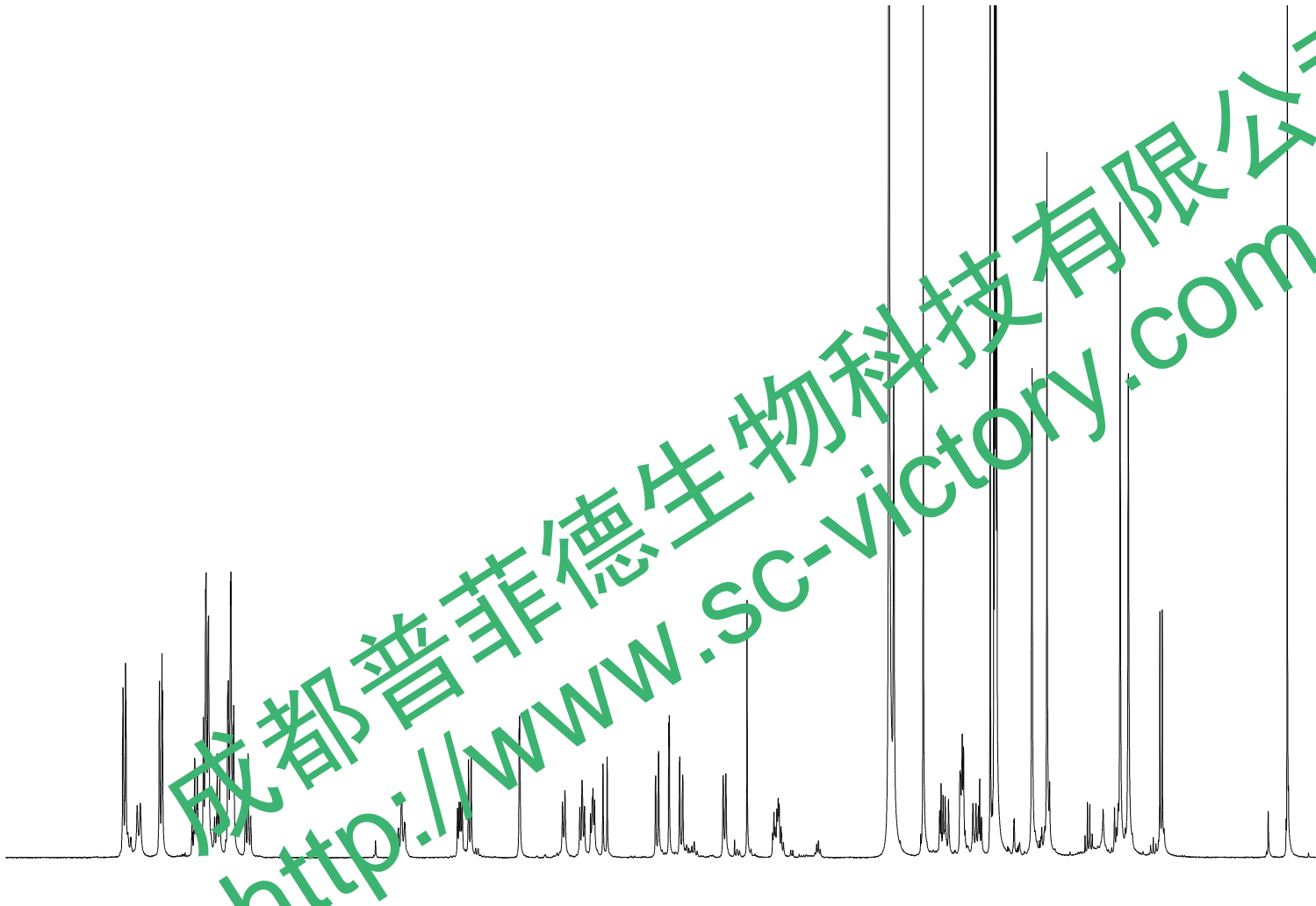
Current Data Parameters
NAME: 1-Biao-10-QuYiXianJiZiShanChun-1H NMR Acetone-d6
EXPNO: 1
PROCNO: 1

F2 - Acquisition Parameters
Date_ 20170927
Time 15.10
INSTRUM spect
PROBHD 5 mm PABBO BB/
PULPROG zg30
TD 65536
SOLVENT Acetone
NS 64
DS 2
SWH 8012.820 Hz
FIDRES 0.122266 Hz
AQ 4.0894465 sec
RG 202.5
DW 62.400 usec
DE 6.50 usec
TE 301.1 K
D1 2.00000000 sec
TDO 1

===== CHANNEL f1 =====
SFO1 400.1324710 MHz
NUC1 1H
P1 14.79 usec
PLW1 11.50800037 W

F2 - Processing parameters
SI 65536
SF 400.1300065 MHz
WDW EM
SSB 0
LB 0.30 Hz
GB 0
PC 1.00
SR 6.49 Hz
  
```

成都普菲德生物科技有限公司  
http://www.SC-victory.com



8.5 8.0 7.5 7.0 6.5 6.0 5.5 5.0 4.5 4.0 3.5 3.0 2.5 2.0 1.5 1.0 0.5 ppm

1.98  
1.01  
2.23  
1.22  
4.32  
1.29  
4.36  
1.20  
  
1.11  
1.01  
1.05  
1.00  
0.90  
1.14  
1.14  
0.89  
1.06  
0.95  
1.09  
1.02  
0.87  
1.41  
  
3.26  
3.17  
1.63  
2.13  
1.48  
2.22  
3.28  
2.93  
3.01  
3.16  
1.32

— 216.09

173.58  
173.51  
167.60  
166.80  
140.49  
138.09  
137.29  
135.63  
134.09  
132.24  
131.44  
130.95  
129.56  
129.31  
129.20  
128.40  
128.31  
128.29

83.13  
82.84  
79.18  
78.81  
78.19  
77.09  
76.61  
74.89  
71.81  
58.09  
56.85  
43.56  
41.08  
37.51  
36.16  
26.48  
23.09  
22.98  
17.23  
14.64



Current Data Parameters  
NAME 7-Biao-10-QuYiXianJiZiShanChun-13C NMR Acetone-d6  
EXNO 1  
PROCNO 1

F2 - Acquisition Parameters  
Date\_ 20170927  
Time 23.59  
INSTRUM spect  
PROBHD 5 mm QNP 1H/13  
PULPROG zg30  
TD 65536  
SOLVENT Acetone  
NS 6000  
DS 4  
SWH 24038.461 Hz  
FIDFS 0.366798 Hz  
AQ 1.3631488 sec  
RG 202.5  
DQW 20.800 usec  
DE 6.50 usec  
TE 301.2 K  
D1 2.00000000 sec  
D11 0.03000000 sec  
SFO 1

===== CHANNEL f1 =====  
SFO1 100.6228298 MHz  
NUC1 13C  
P1 10.13 usec  
PLW1 51.00000000 W

===== CHANNEL f2 =====  
SFO2 400.1316005 MHz  
NUC2 1H  
PCPDPRG2 waltz16  
PCPD2 90.00 usec  
PLW2 11.50800037 W  
PLW12 0.31077999 W

F2 - Processing parameters  
SI 262144  
SF 100.6126770 MHz  
WDW EM  
SSB 0  
LB 1.00 Hz  
GB 0  
PC 1.40  
SR -91.97 Hz

