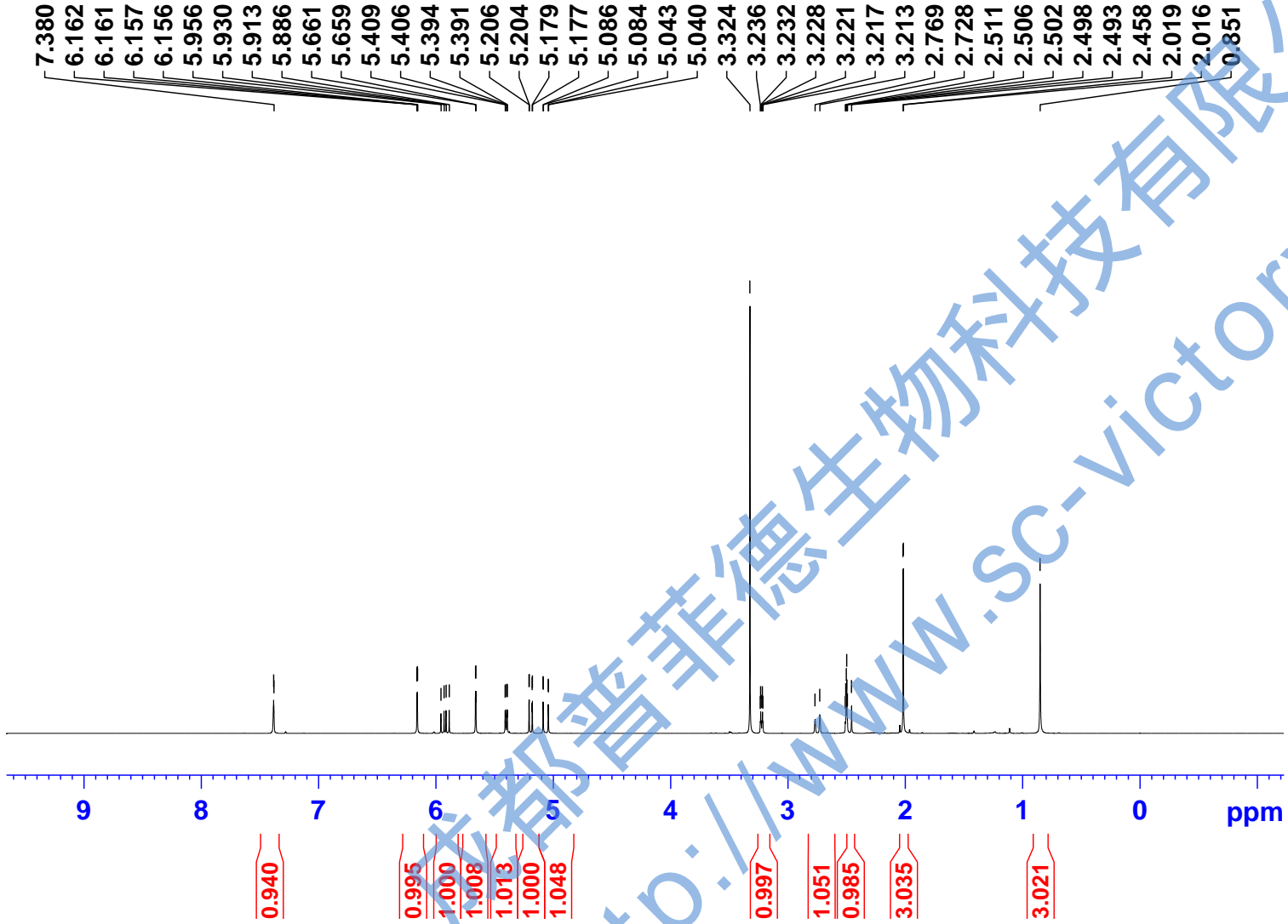


WY-2#



Current Data Parameters  
NAME WY-2#  
EXPNO 10  
PROCNO 1

F2 - Acquisition Parameters  
Date\_ 20201015  
Time 18.29 h  
INSTRUM spect  
PROBHD z116098\_0564 (  
PULPROG zg30  
TD 65536  
SOLVENT DMSO  
NS 16  
DS 2  
SWH 8012.820 Hz  
FIDRES 0.244532 Hz  
AQ 4.0894465 sec  
RG 70.67  
DW 62.400 usec  
DE 6.50 usec  
TE 300.0 K  
D1 1.00000000 sec  
TD0 1  
SFO1 400.1324708 MHz  
NUC1 1H  
P1 10.35 usec  
PLW1 14.56099987 W

F2 - Processing parameters  
SI 65536  
SF 400.1300023 MHz  
WDW EM  
SSB 0  
LB 0.30 Hz  
GB 0  
PC 1.00

http://www.sc-victory.com

WY-2#

— 170.83

— 152.97

— 144.28

— 139.27

— 137.12

— 123.93

— 119.73

— 114.96

— 113.87

— 72.05

— 45.97

— 40.97

— 40.63

— 40.42

— 40.21

— 40.00

— 39.79

— 39.58

— 39.37

— 34.56

— 18.85

— 8.47

**BRUKER**

Current Data Parameters

NAME WY-2#  
EXPNO 11  
PROCNO 1

F2 - Acquisition Parameters

Date\_ 20201015  
Time 18.59 h  
INSTRUM spect  
PROBHD Z116098\_0564 (  
PULPROG zgpg30  
TD 65536  
SOLVENT DMSO  
NS 500  
DS 4  
SWH 24038.461 Hz  
FIDRES 0.733596 Hz  
AQ 1.3631488 sec  
RG 198.68  
DW 20.800 usec  
DE 6.50 usec  
TE 300.0 K  
D1 2.00000000 sec  
D11 0.03000000 sec  
TD0 1  
SFO1 100.6228298 MHz  
NUC1 13C  
P1 10.53 usec  
PLW1 69.16899872 W  
SFO2 400.1316005 MHz  
NUC2 1H  
CPDPRG[2] waltz16  
PCPD2 90.00 usec  
PLW2 14.56099987 W  
PLW12 0.19257000 W  
PLW13 0.09686100 W

F2 - Processing parameters

SI 32768  
SF 100.6127685 MHz  
WDW EM  
SSB 0  
LB 1.00 Hz  
GB 0  
PC 1.40

