

7.809
7.785

7.317

6.667

6.192
6.168

3.823
3.810
3.806
3.793
3.112
3.100
3.070
3.058
2.819
2.802
2.777
2.760

1.364
1.315

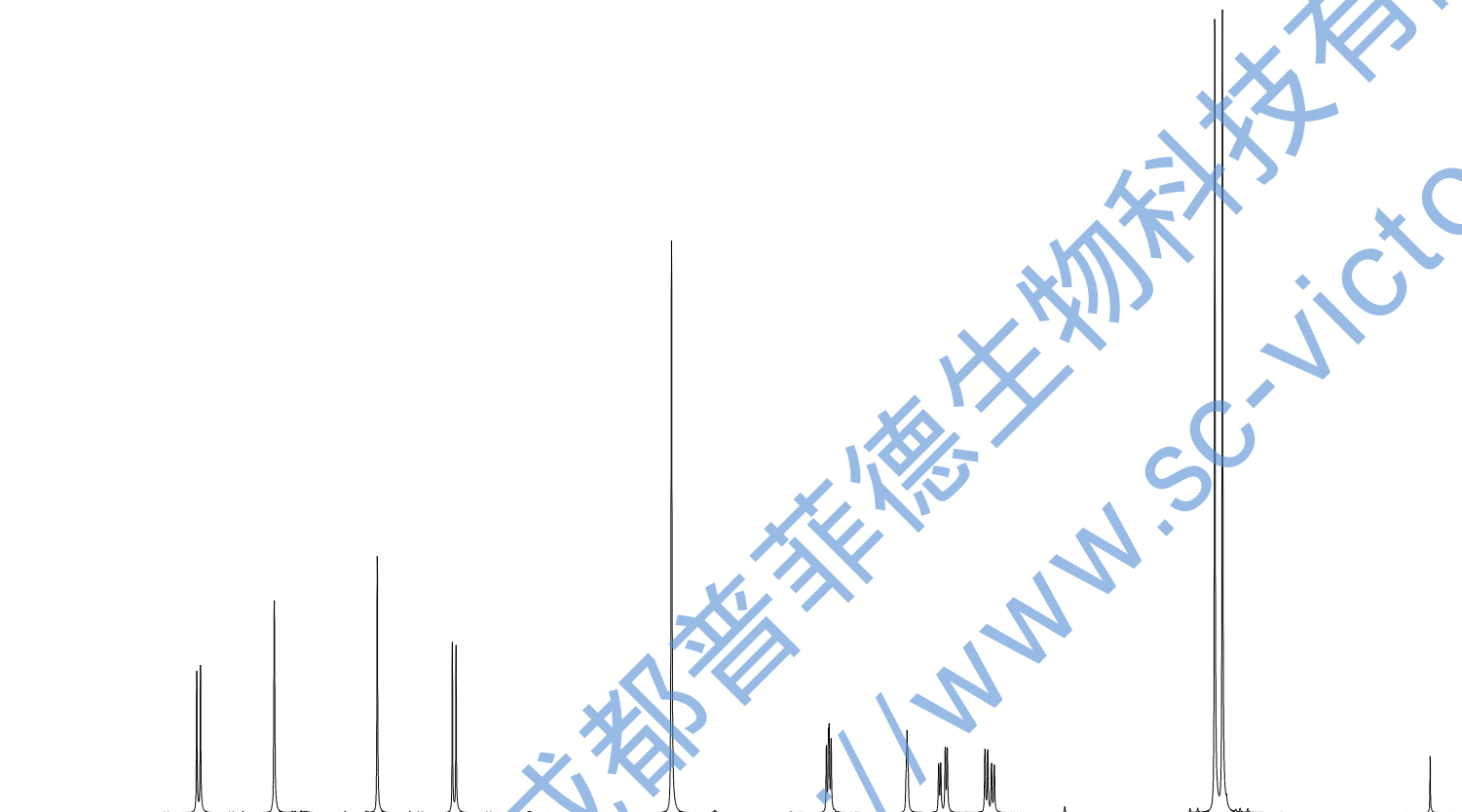


Current Data Parameters
NAME ZiHuaQianHuChun-1H NMR CD3OD
EXPNO 1
PROCNO 1

F2 - Acquisition Parameters
Date_ 20170720
Time 11.18
INSTRUM spect
PROBHD 5 mm PABBO BB/
PULPROG zg30
TD 65536
SOLVENT MeOD
NS 16
DS 2
SWH 8012.820 Hz
FIDRES 0.122266 Hz
AQ 4.0894465 sec
RG 92
DW 62.400 usec
DE 6.50 usec
TE 301.1 K
D1 1.0000000 sec
TD0 1

==== CHANNEL f1 =====
SF01 400.1324710 MHz
NUC1 1H
P1 14.79 usec
PLW1 11.50800037 W

F2 - Processing parameters
SI 65536
SF 400.1300068 MHz
WDW EM
SSB 0
LB 0.30 Hz
GB 0
PC 1.00
SR 6.77 Hz



8.5 8.0 7.5 7.0 6.5 6.0 5.5 5.0 4.5 4.0 3.5 3.0 2.5 2.0 1.5 1.0 0.5 ppm

1.01

1.00

0.93

0.98

1.00

1.02

1.02

2.98

3.06



— 163.52
— 158.43
— 155.32

— 145.69

— 130.51

— 119.40
— 114.09
— 113.22
— 104.88

— 79.74
— 69.77

— 31.55
— 25.93
— 21.69

Current Data Parameters
NAME ZiHuaQianHuChun-13C NMR CD3OD
EXPNO 1
PROCNO 1

F2 - Acquisition Parameters
Date_ 20170720
Time 11.31
INSTRUM spect
PROBHD 5 mm PABBO BB/
PULPROG zgig30
TD 65536
SOLVENT MeOD
NS 211
DS 4
SWH 24038.461 Hz
FIDRES 0.366798 Hz
AQ 1.3631488 sec
RG 202.5
DW 20.800 usec
DE 6.50 usec
TE 301.1 K
D1 2.0000000 sec
D11 0.0300000 sec
TD0 1

==== CHANNEL f1 =====
SFO1 100.6228298 MHz
NUC1 13C
P1 10.13 usec
PLW1 51.0000000 W

==== CHANNEL f2 =====
SFO2 400.1316005 MHz
NUC2 1H
CPDPRG[2] waltz16
PCPD2 90.00 usec
PLW2 11.50800037 W
PLW12 0.31077999 W

F2 - Processing parameters
SI 262144
SF 100.6126245 MHz
WDW EM
SSB 0
LB 1.00 Hz
GB 0
PC 1.40
SR -144.50 Hz

