

Current Data Parameters  
 NAME aweisuansongbaizhi  
 EXPNO 1  
 PROCNO 1

F2 - Acquisition Parameters  
 Date\_ 20160606  
 Time 18.16  
 INSTRUM spect  
 PROBHD 5 mm PABBO BB-  
 PULPROG zg30  
 TD 65536  
 SOLVENT CDCl3  
 NS 16  
 DS 2  
 SWH 8223.685 Hz  
 FIDRES 0.125483 Hz  
 AQ 3.9846387 sec  
 RG 32.73  
 DW 60.800 usec  
 DE 6.50 usec  
 TE 302.0 K  
 D1 1.00000000 sec  
 TD0 1

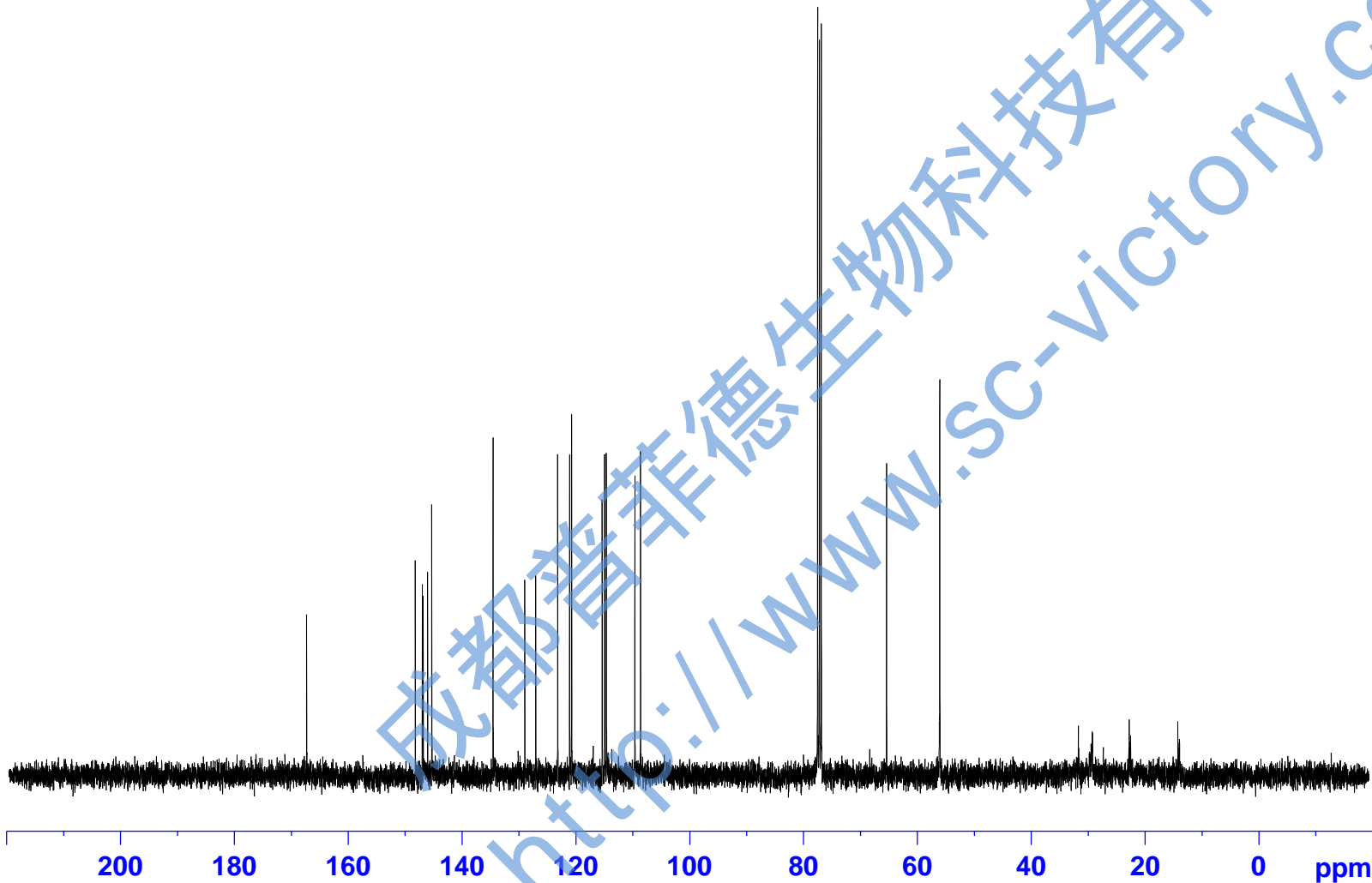
==== CHANNEL f1 =====  
 NUC1 1H  
 P1 9.00 usec  
 PLW1 19.00000000 W  
 SFO1 400.1324710 MHz

F2 - Processing parameters  
 SI 65536  
 SF 400.1300096 MHz  
 WDW EM  
 SSB 0  
 LB 0.30 Hz  
 GB 0  
 PC 1.00



167.279  
148.190  
146.954  
146.795  
146.014  
145.296  
134.516  
128.946  
127.022  
123.165  
121.058  
120.715  
115.346  
114.912  
114.609  
109.594  
108.603

77.478  
77.161  
76.843  
65.359  
56.032  
56.006



Current Data Parameters  
NAME aweisuansongbaizhi  
EXPNO 2  
PROCNO 1

F2 - Acquisition Parameters  
Date\_ 20160606  
Time 18.19  
INSTRUM spect  
PROBHD 5 mm PABBO BB-  
PULPROG zgpg30  
TD 65536  
SOLVENT CDCl3  
NS 106  
DS 4  
SWH 24038.461 Hz  
FIDRES 0.366798 Hz  
AQ 1.3631988 sec  
RG 194.85  
DW 20.800 usec  
DE 6.50 usec  
TE 302.4 K  
D1 2.0000000 sec  
D11 0.0300000 sec  
TD0 1

==== CHANNEL f1 =====  
NUC1 13C  
P1 10.00 usec  
PLW1 95.0000000 W  
SFO1 100.6228293 MHz

==== CHANNEL f2 =====  
CPDPRG2 waltz16  
NUC2 1H  
PCPD2 80.00 usec  
PLW2 19.0000000 W  
PLW12 0.24047001 W  
PLW13 0.15390000 W  
SFO2 400.1316005 MHz

F2 - Processing parameters  
SI 32768  
SF 100.6127603 MHz  
WDW EM  
SSB 0  
LB 1.00 Hz  
GB 0  
PC 1.40